

Understanding Your Knee Health: From Diagnosis to Advanced Surgical Care

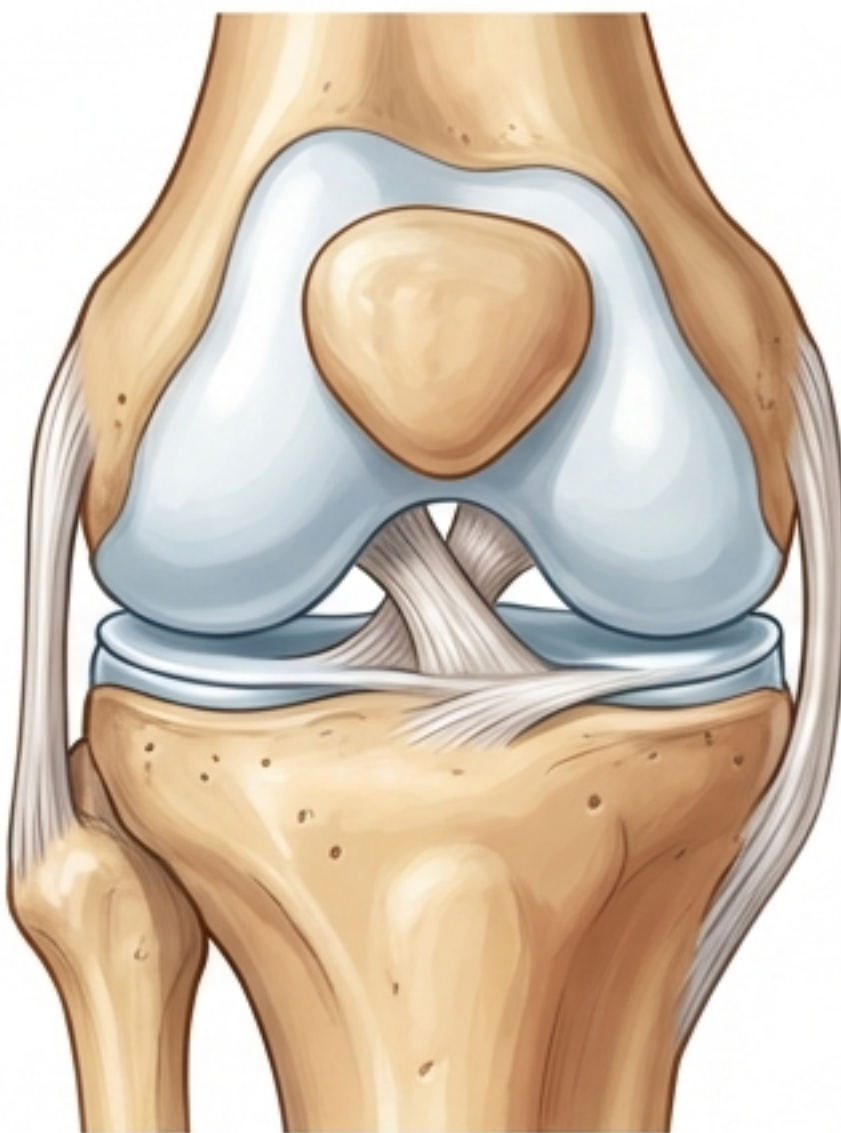
A comprehensive guide to Osteoarthritis, Total Knee Arthroplasty (TKA), and the advantages of Robotic-Assisted Surgery.

Prepared for the patients of [Surgeon Name/Clinic]



What is Knee Osteoarthritis?

The Healthy Knee



The Arthritic Knee



The Anatomy: The knee is a hinge joint where the femur (thighbone), tibia (shinbone), and patella (kneecap) meet.

The Cushion: In a healthy knee, bone ends are covered in smooth articular cartilage, allowing friction-free gliding.

The Condition: Osteoarthritis (OA) is a degenerative 'wear-and-tear' condition involving the progressive breakdown of this cartilage.

The Result: As cartilage thins, the protective space decreases, leading to stiffness, swelling, and painful bone-on-bone contact.

Why Does Osteoarthritis Occur?



Age

Most common in adults over 50 as cartilage changes over time.



Weight

Higher BMI places increased mechanical stress on weight-bearing joints.



Genetics

Family history of arthritis can predispose individuals to the condition.

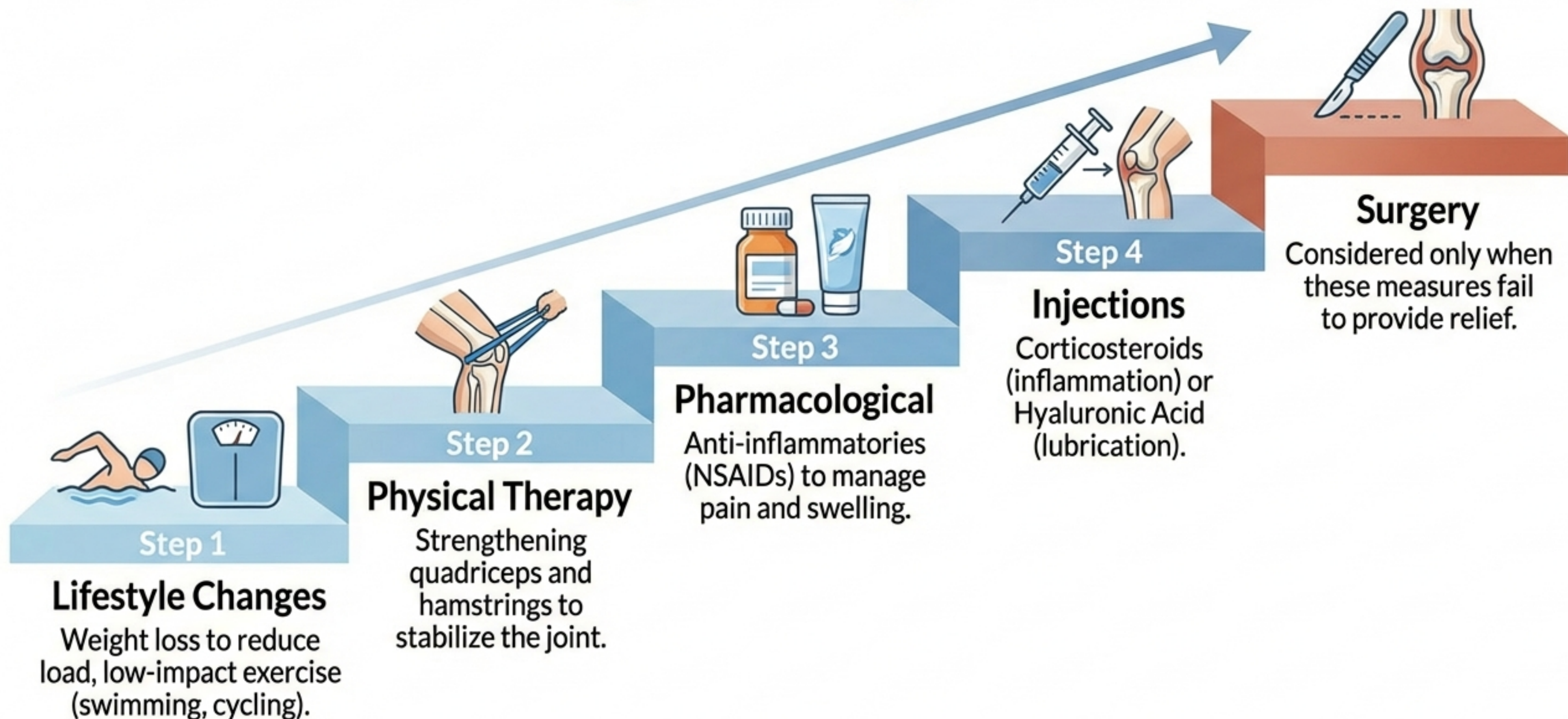


History

Previous sports injuries or fractures can accelerate degeneration.

Progression: The disease develops slowly. As cartilage wears away, the joint may develop bone spurs (osteophytes) and deformities, such as becoming 'bow-legged' (varus) or 'knock-kneed' (valgus).

The Treatment Landscape: Exhausting Non-Surgical Options

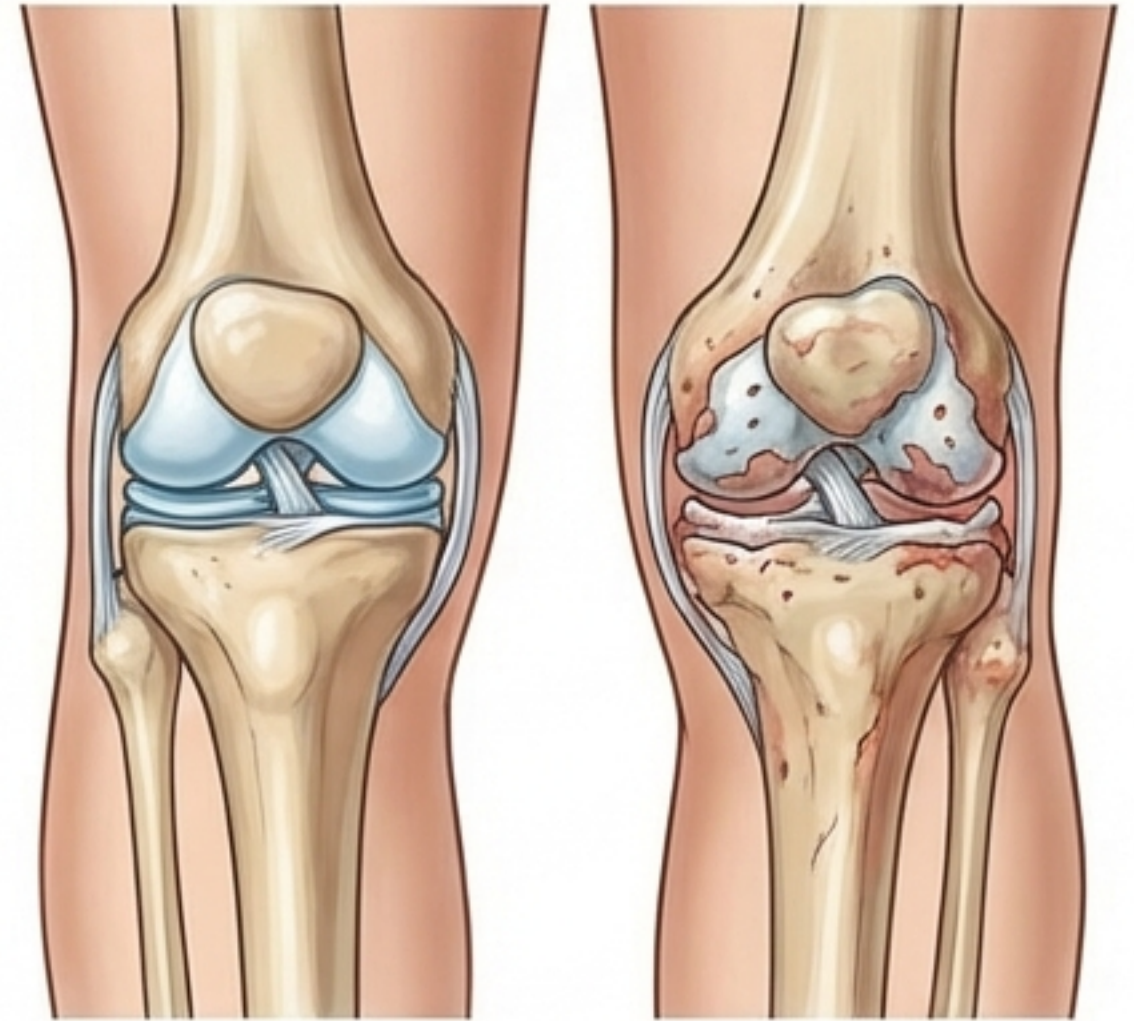


Indications: When is a Knee Replacement Needed?

- ✓ Severe pain limiting daily activities (walking, stairs, standing).
- ✓ Pain that persists while resting or sleeping.
- ✓ Chronic inflammation/swelling not improved by medication.
- ✓ Visible knee deformity (bowing).

The Goal: To relieve pain, correct leg deformity, and help you resume normal daily activities.

Primary Indication: Surgery is indicated when quality of life is significantly compromised and conservative treatment has failed.



What is a Total Knee Arthroplasty (TKA)?

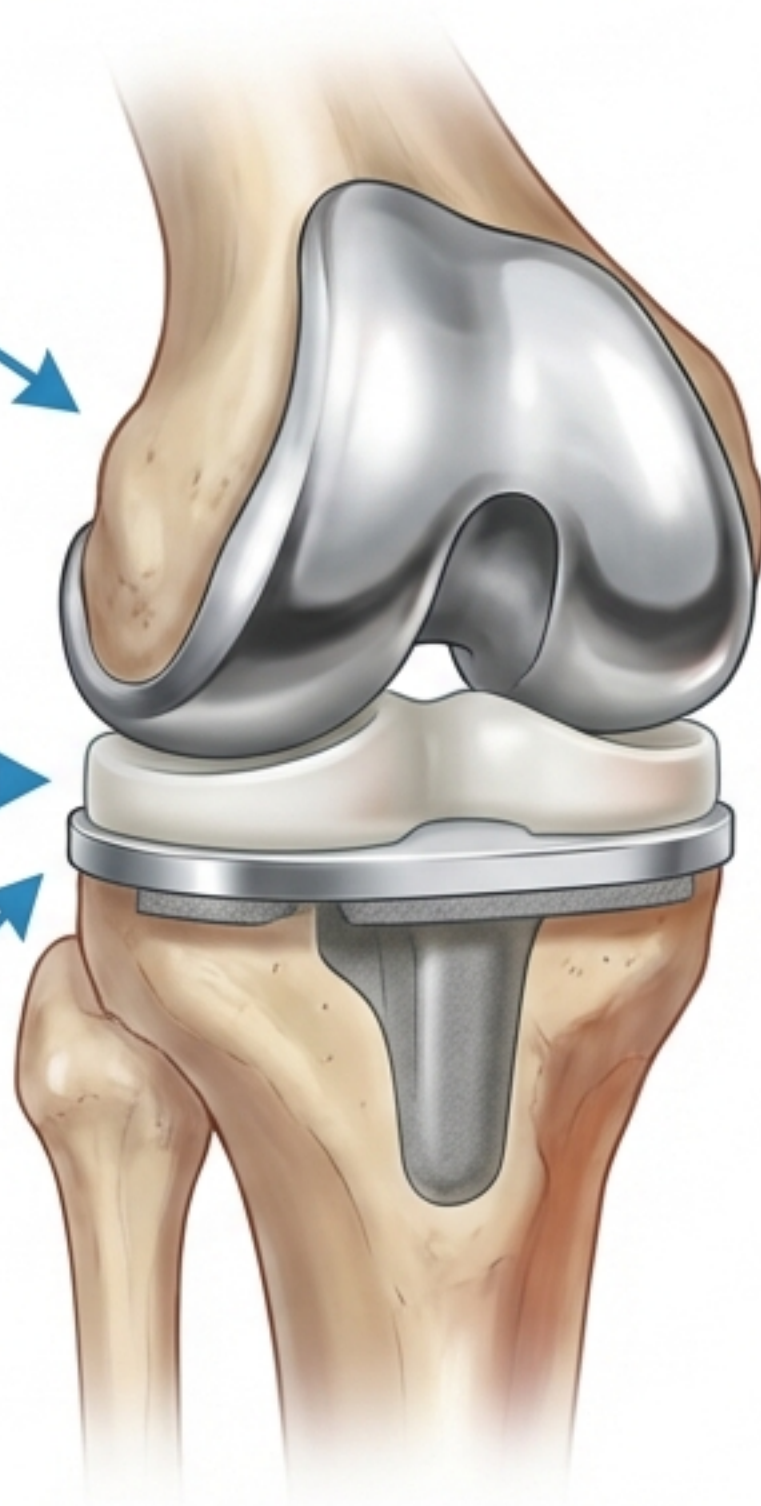
Technically, it is a “knee resurfacing” procedure.

Femoral Component:

A metal cap curves around the end of the thighbone.

Spacer: Medical-grade plastic insert creates a smooth gliding surface.

Tibial Component: A flat metal platform replaces the top of the shinbone.



The Procedure:

The surgeon removes damaged cartilage and a small amount of bone, then places these implants to mimic natural motion.

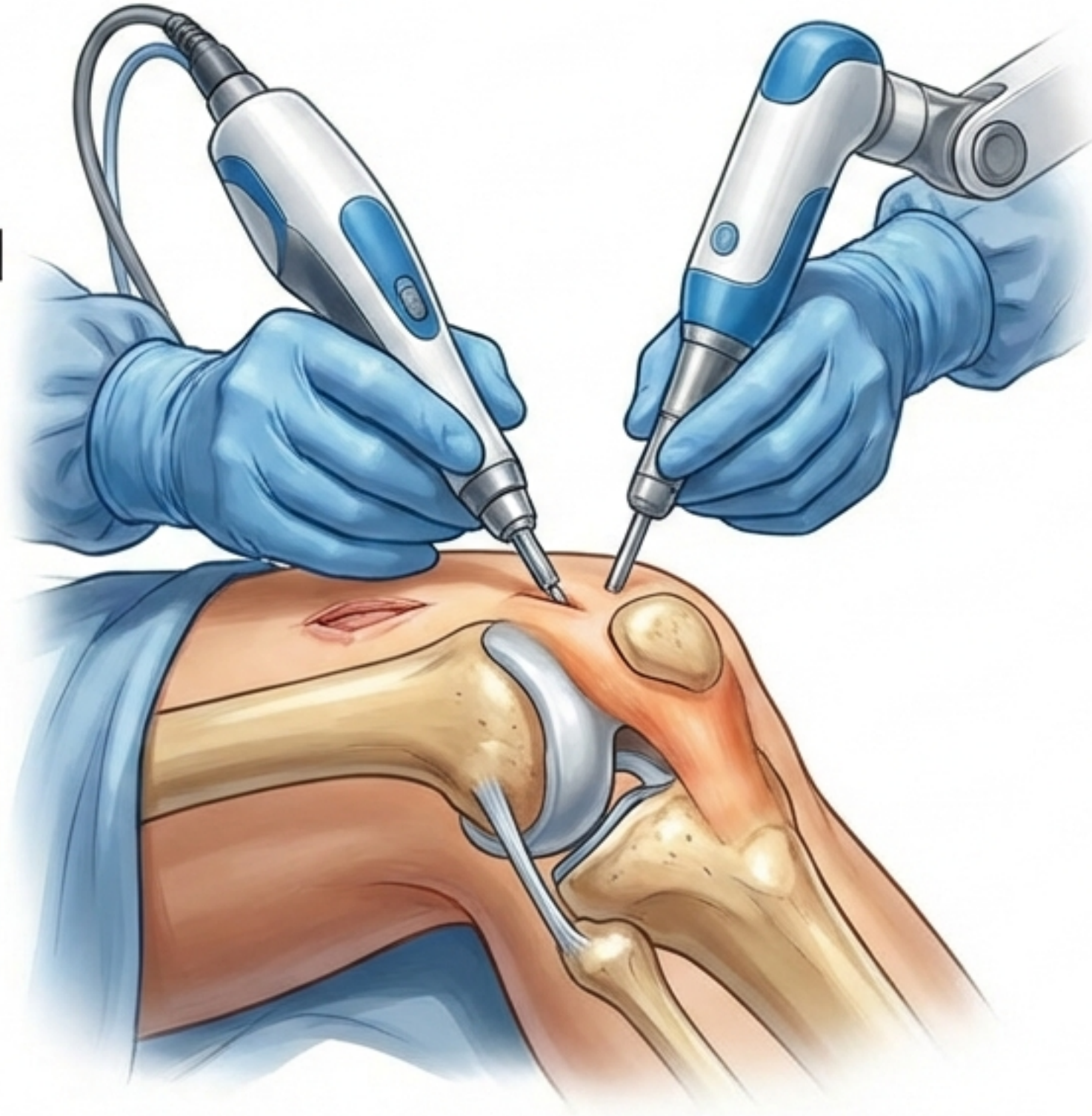
Introducing Robotic-Assisted Surgery (RAS)

The Concept:

Combining surgeon expertise with advanced computer precision.

Myth Buster:

The robot does **NOT** perform surgery autonomously. The surgeon is in control 100% of the time.



How It Helps:

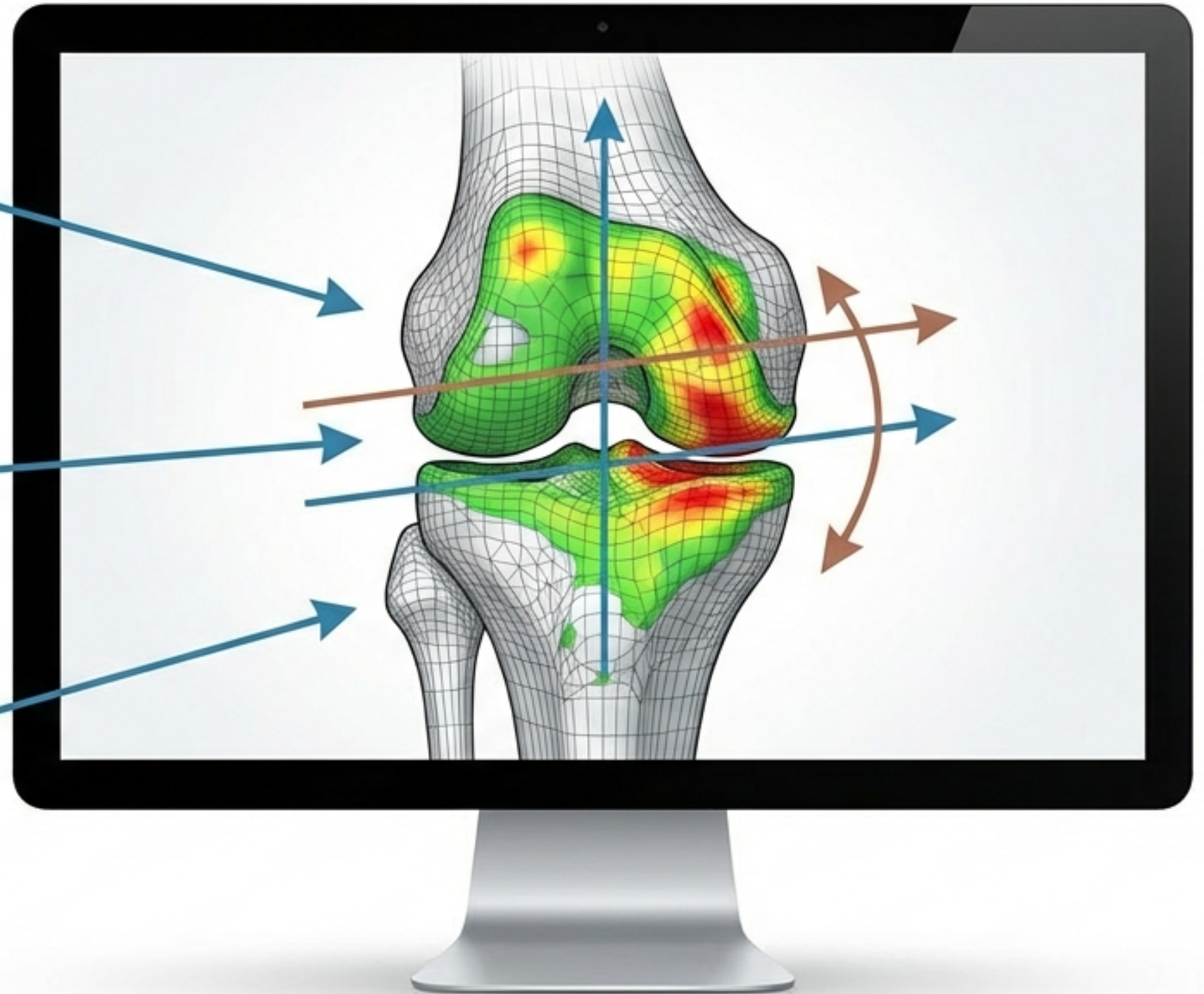
It acts as a high-tech assistant, providing real-time data and establishing '**haptic boundaries**' to ensure instruments stay within the safe zone.

The 3D Plan: Tailored to Your Anatomy

Mapping: A CT scan or intraoperative mapping creates a virtual 3D model of YOUR specific knee.

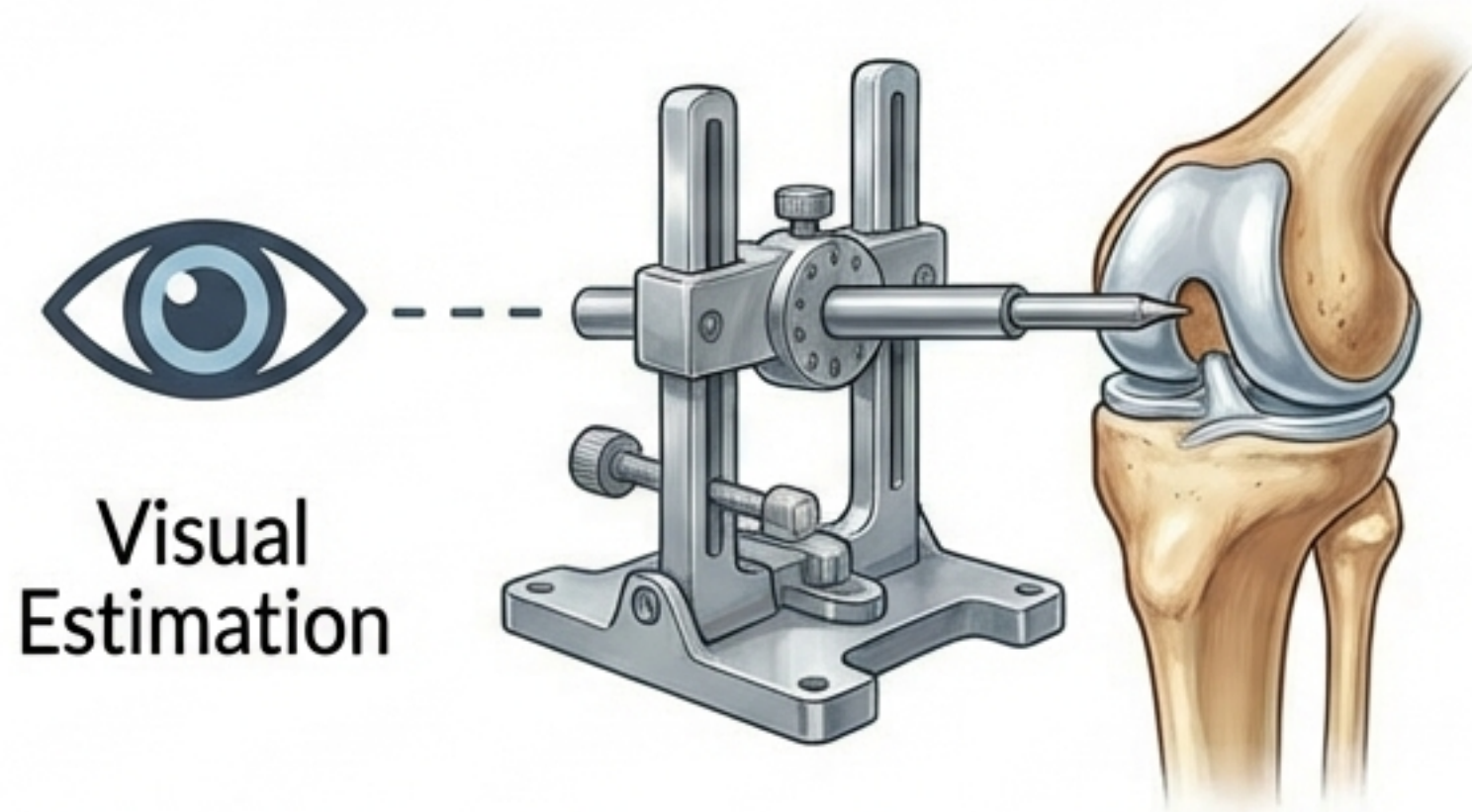
Virtual Surgery: The surgeon plans the exact size, orientation, and alignment of the implant BEFORE making any bone cuts.

Personalization: Accounts for unique bone structure and ligament tension to optimize joint line restoration.



Advantage 1: Unmatched Precision and Alignment

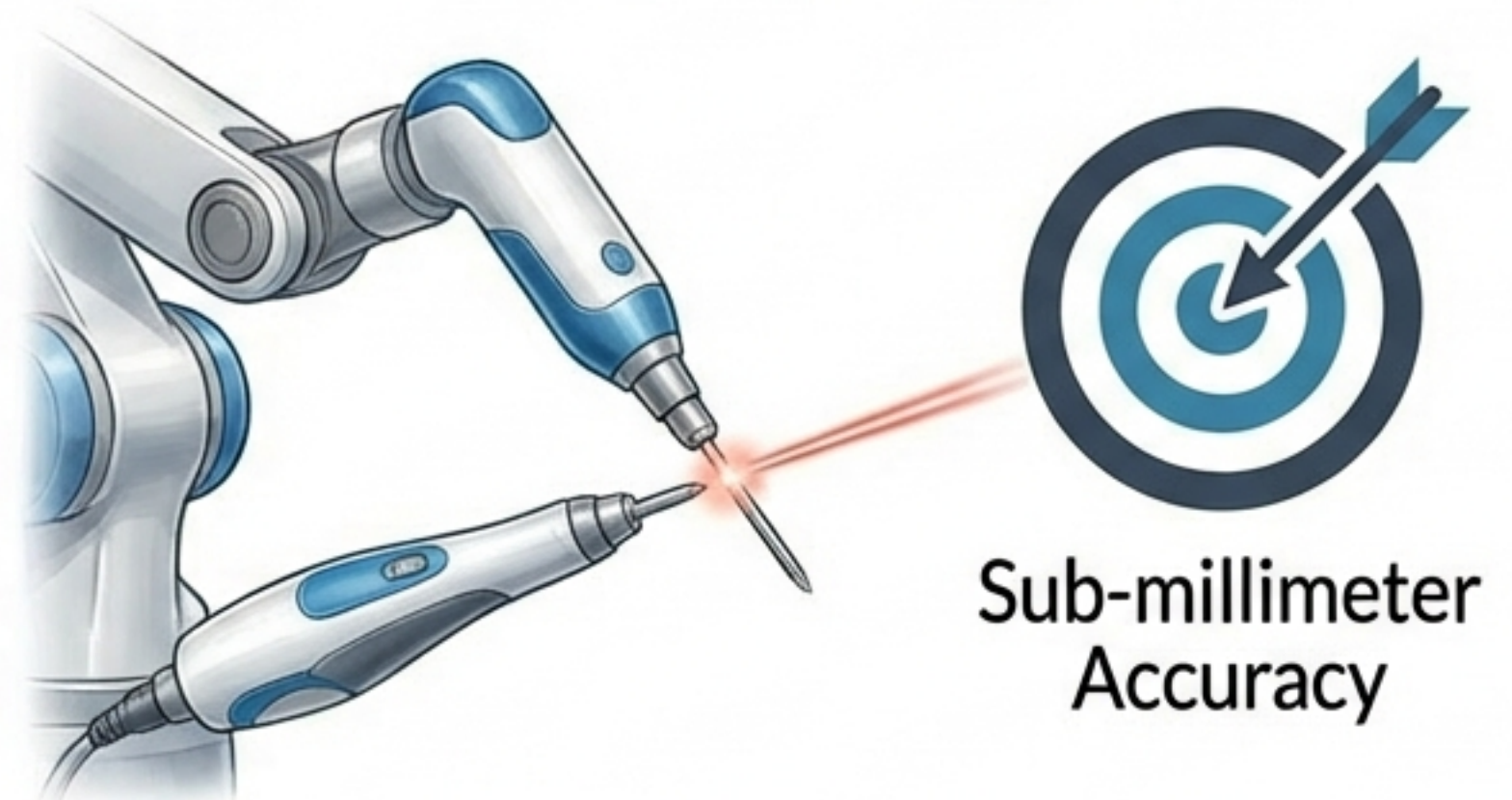
Manual Technique



Visual Estimation

The Robotic Edge: Robotic systems allow for bone resections consistent within **1 mm** and **1 degree** of the plan.

Robotic Technique

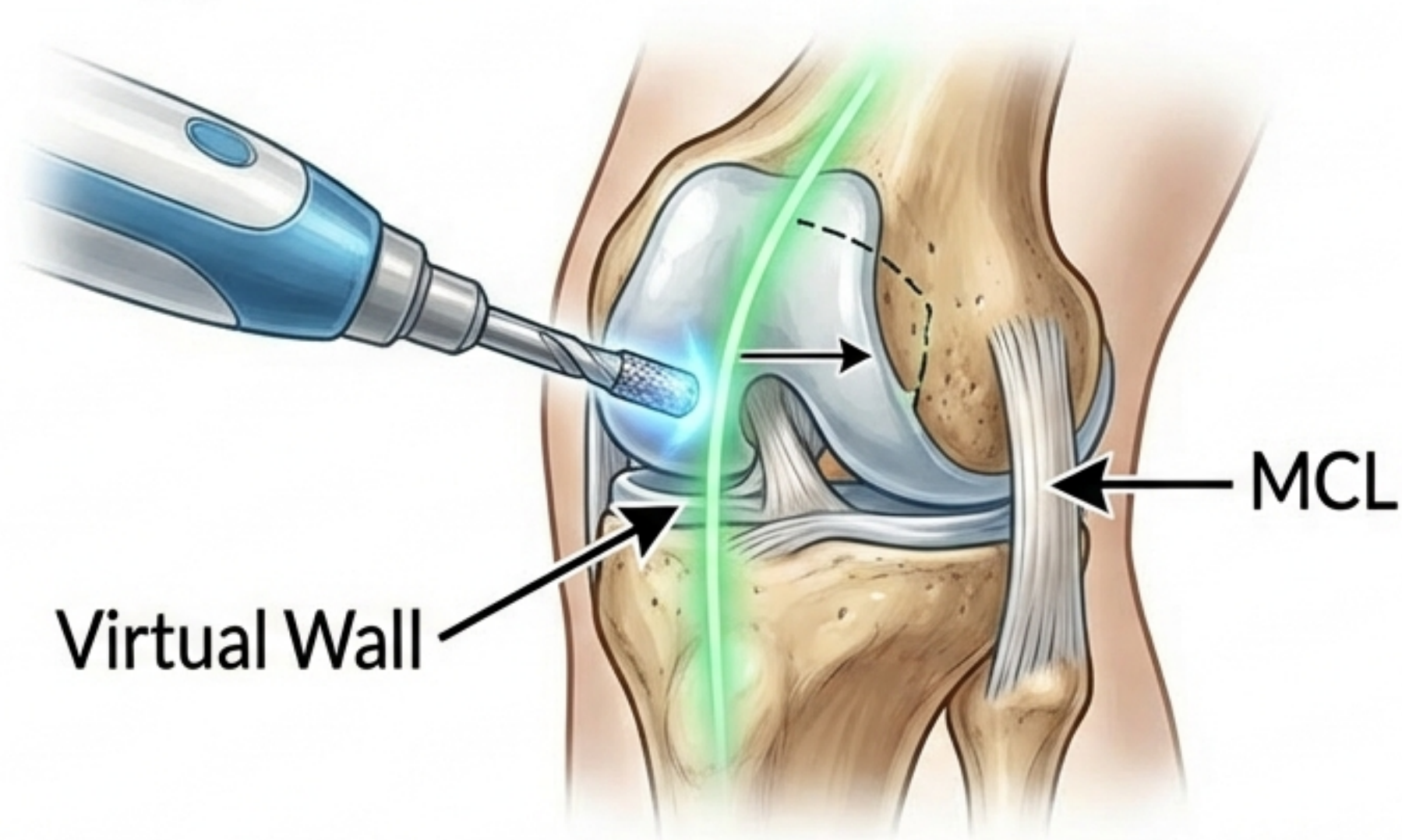


Sub-millimeter Accuracy

Data Driven: Studies indicate robotic-assisted TKA reduces “alignment outliers” (deviations $>3^\circ$) by nearly **67%** compared to manual techniques.

Why It Matters: Proper alignment is critical for implant longevity and a natural-feeling knee.

Advantage 2: Soft Tissue Protection



Haptic Boundaries: The system creates virtual safety zones. If the instrument reaches the edge of the planned bone removal, the robot stops automatically.

Reduced Trauma: This protects vital structures like ligaments and nerves, minimizing the need for soft tissue retractors and preserving the knee's natural envelope.

Advantage 3: Enhanced Recovery and Pain Management



Less Opioid Use



Shorter Stay



Faster Function

Pain Management: Patients undergoing robotic TKA consumed significantly fewer opioids (approx. 145 fewer morphine milligram equivalents) in the first 90 days.

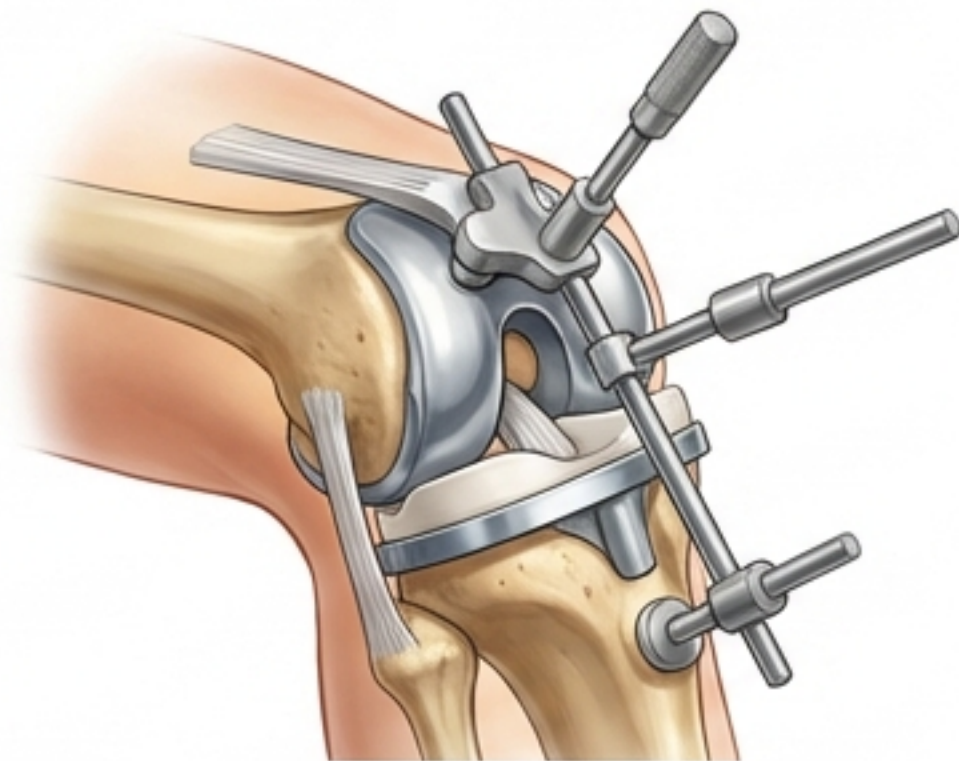
Discharge: Robotic assistance is associated with shorter hospital stays (approx. 8 hours less on average), facilitating quicker return home.

Mobility: Potential for faster return to knee bending and independent walking.

Comparing the Approaches

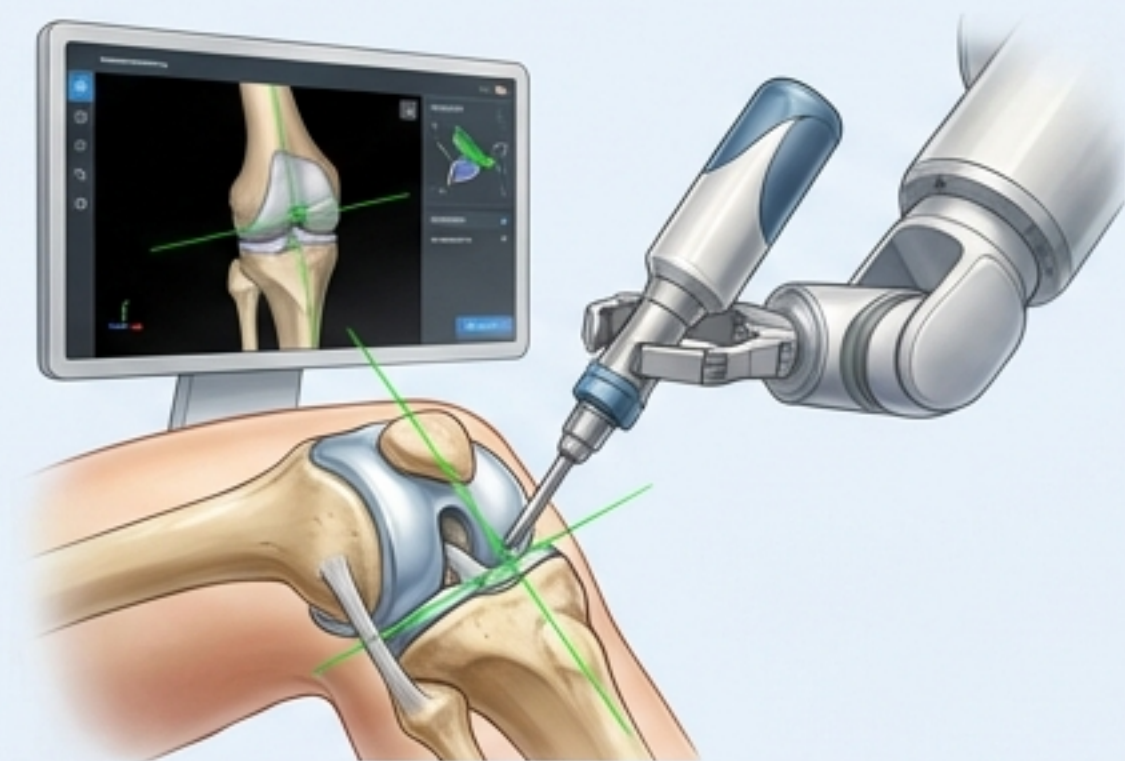
Traditional Manual TKA

- The historical “Gold Standard”
- Relies on mechanical jigs and rods
- Alignment based on visual estimation
- High success rate proven over decades



Robotic-Assisted TKA

- The “Evolution” of the standard
- Relies on 3D virtual planning & real-time feedback
- Alignment accurate to within 1mm / 1 degree
- Potential for less pain and faster early recovery



Survivorship and Long-Term Outlook



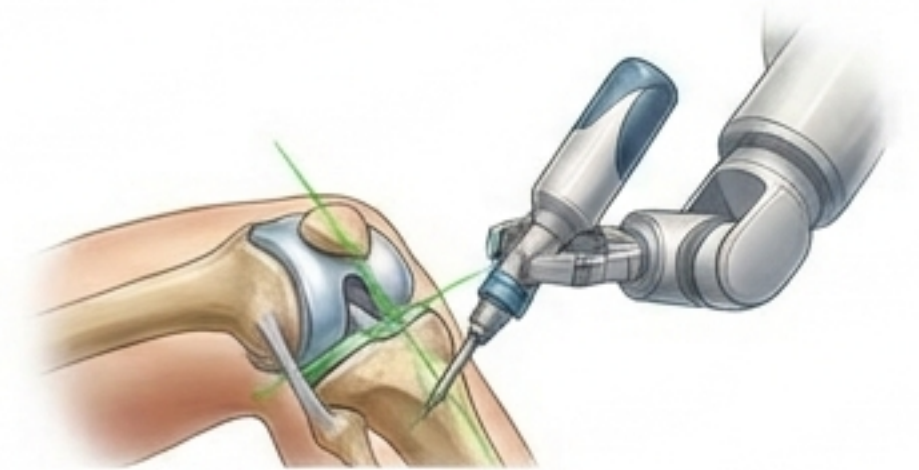
Proven Longevity: Modern knee replacements are **designed to last**.

The Robotic Promise: By achieving perfect alignment and balance, the goal is to **minimize mechanical loosening** and extend this **longevity even further**.

Life After Surgery: Return to low-impact activities like **walking, swimming, golfing, and biking without pain**.



>90% of implants still functioning well.



Risks and Considerations



- **Surgical Risks:** As with any major surgery, risks include infection, stiffness, blood clots, or reaction to anesthesia.
- **The Learning Curve:** Robotic systems require specialized training. Your surgical team is experienced in this technology to ensure safety.
- **No Magic Bullet:** The robot is a precision tool, but the outcome still relies on the surgeon's judgment and your dedication to physical therapy.

Taking the Next Step



Summary: Knee OA is progressive but treatable. Robotic-assisted TKA offers a personalized, precise path to recovery.

Your Plan: We will evaluate your anatomy to determine if you are a candidate for robotic-assisted surgery.

Call to Action: Let's restore your mobility together.

[Insert Clinic Phone Number / Website]